

UTSA[®]

The University of Texas
at San Antonio[™]

**The Real
Estate Council
of San Antonio**

Dr. Taylor Eighmy
June 7, 2018





UPCOMING INITIATIVE

Campus Master Plan

Enhancing engagement with the
San Antonio community

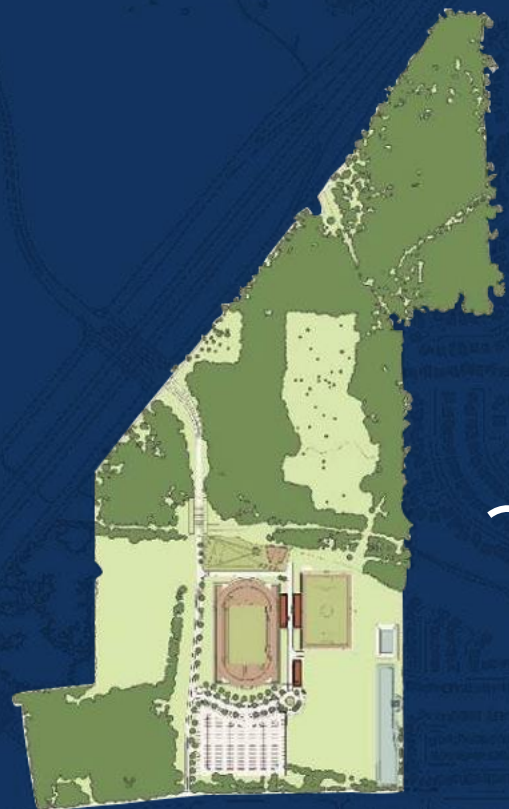
Meeting the infrastructure needs
of our growing student population

Page/



A night-time photograph of the San Antonio skyline, featuring illuminated skyscrapers and the Tower of the Americas against a dark blue sky.

Where We Are Today



Imagine UTSA in 10 Years...

- 2+ campuses
- NRUF/Carnegie R1
- > 45,000 students
- > 2,000 faculty
- \$400M in research expenditures
- Endowment of \$500M
- 300 endowed chairs/professorships
- A destination of choice for students
- Urban-serving
- Hispanic-thriving
- 3M square feet of new construction across 3 campuses
- 25 annual faculty prestigious awards
- 15 faculty in the national academies
- Commensurate athletics conference membership



Reimagining the Downtown Campus



IMAGINE

**ASU
Downtown
Campus**

IMAGINE

ASU Downtown Campus Footprint

- 11,500 students (going to 15k)
- 18 acres
- 19 buildings
- 3M GSF (going to 4M)
- 2,000 beds (going to 3,000)
- Light rail to other campuses
- Bus loops
- Rec Center
- Mixed use



IMAGINE

ASU Colleges and Schools

- College of Health Solutions
- College of Integrative Science and Arts
- Walter Cronkite School of Journalism and Mass Communication
- Sandra Day O'Connor College of Law
- Graduate Education
- College of Public Service and Community Solutions
- College of Nursing and Health Innovation
- Mary Lou Fulton Teachers College
- Barrett, The Honors College
- University College

Imagine

UTSA's "Centro" Campus

- 15,000+ students
- 1,000+ faculty
- 1,000+ staff
- 3+ colleges
- 2 new schools
- 2 new institutes
- Distributed campus
- Anchoring the near West side
- Residential campus with neighborhoods
- Comprehensive student experience
- Dramatic impact to the future of our city

UTSA's Downtown Campus Today





A New
Vision

Distributed Campus Model

Near West Properties

Core Campus

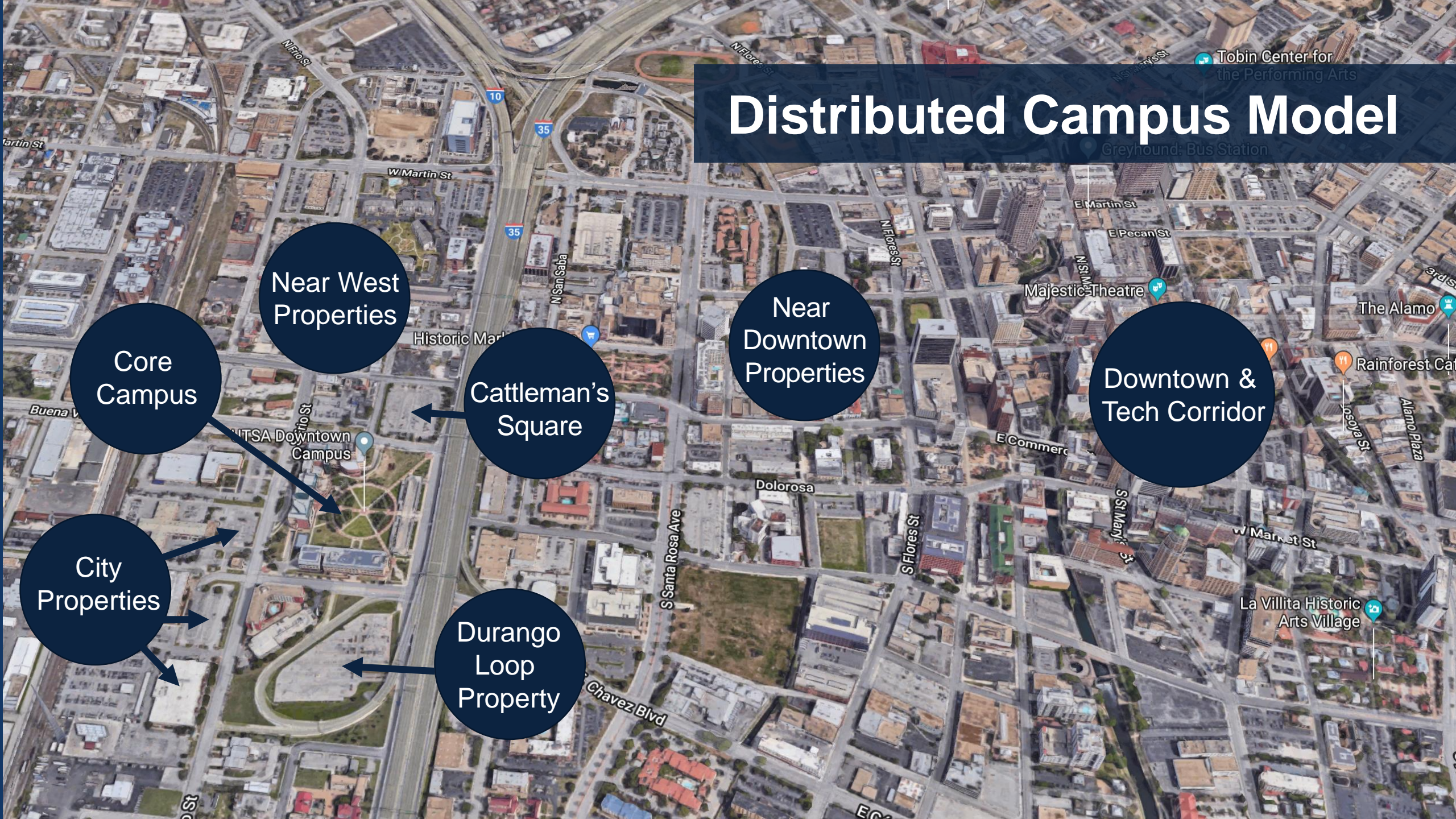
Cattleman's Square

Near Downtown Properties

Downtown & Tech Corridor

City Properties

Durango Loop Property



VISIONING PARTNERSHIP

Urban Land Institute SA

- UTSA
- Councilwoman Shirley Gonzales
- City of San Antonio
- Westside Development Corp.
- Bexar County
- Zona Cultural
- Neighborhood Groups
- VIA
- TxDOT
- San Antonio River Authority
- Sheriff's Office Bexar County
- SAISD
- Westside Schools (e.g. Lanier)
- San Pedro Creek Project
- San Antonio Housing Authority
- Children's Hospital
- University Health System
- UT Health San Antonio
- Haven for Hope
- Esperanza Center





UTSA[®]

National Security Collaboration Center

Cyber UTSA

A leader in cyber education since 1999

FACULTY

70

Six of which are endowed from entities such as AT&T and Rackspace (80/20 Foundation)

4 out of 9

colleges at UTSA include cyber programs

STUDENTS

3,145

undergrads in cyber, cloud, computing & analytics

323

masters students

164

doctoral students

98

students earned undergraduate cybersecurity degrees in 2017-18

26

students earned graduate cybersecurity degrees in 2017-18

RESEARCH

\$100+ Million

Research awards in cyber programs since 2000

RANKINGS

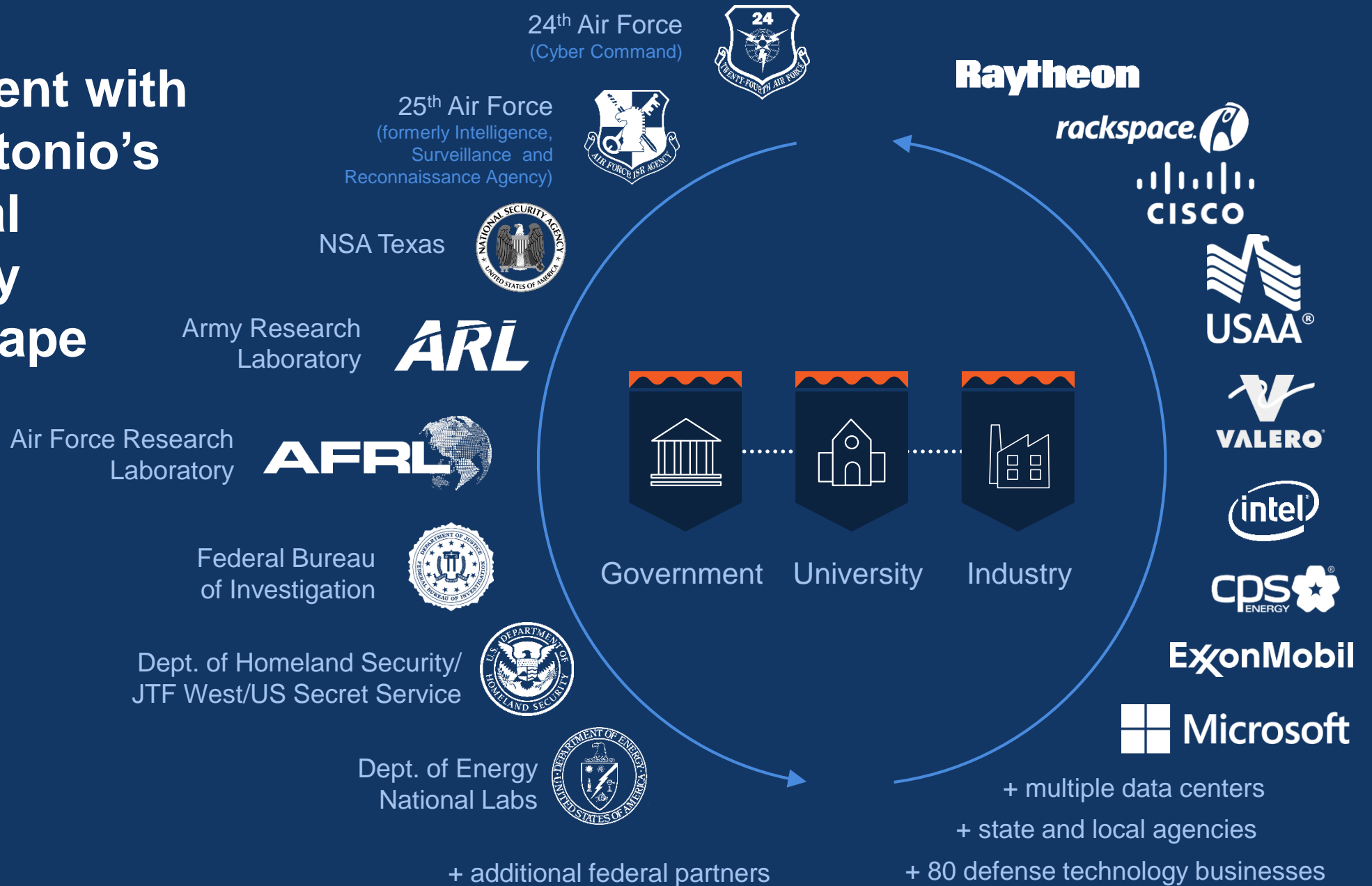
#1

Cybersecurity undergraduate program
Ponemon Institute

#2

Cybersecurity graduate program
Universities.com

Alignment with San Antonio's National Security Landscape



**National Security
Collaboration
Center**
Current Partners

100,000
square feet

five
floors

leading industry
partners



UTSA IS ACTIVELY
PURSUING ADDITIONAL
INDUSTRY PARTNERSHIPS

IMAGINE

**National Security
Collaboration
Center**

**Research
Centers**

- Cyber Center for Security and Analytics
- Collaborative research and training spaces
- Center for Infrastructure Assurance and Security

**Sensitive
Compartmentalized
Information Facility**

- Classified Research
- Federal Partners / Contractors

**Cyber Protective
Operations Center**

- Federal Partners

**Computational
Technology**

- Visualization Laboratory
- High Performance Computing
- Cyber Range

Innovation Factory

- Early Stage Technologies
- Student & Faculty Start Ups

IMAGINE

**National Security
Collaboration
Center**

Texas Cyber Corridor



IMPACT

National Security Collaboration Center

- Fills dire need for cybersecurity workforce
- Fuels San Antonio's Tech Corridor
- Supports major companies growing or moving to San Antonio
- Aligns with federal agency presence
- Advances San Antonio's position as a leader in national security
- Hub for Texas Cyber Corridor





UTSA®

School of Data Science

School of Data Science

Unleashing the power
of data

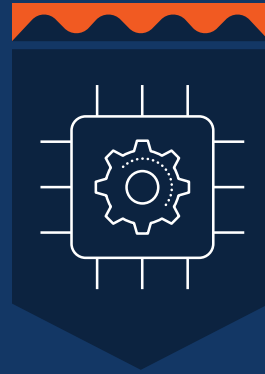


Columbia University
Data Sciences Institute

Departments of
Computer Science &
Computer Engineering



Department of
Statistics and Data Science



Department of Information
Systems & Cyber Security



The Center of Infrastructure
Assurance & Security



The Cyber Center for
Security and Analytics



The Institute for
Cyber Security



The Open Cloud
Institute



The Texas Sustainable
Energy Research Institute

IMPACT

School of Data Science

- Foundational to cybersecurity programs
- Answers the national call for workforce needs
- Brings distinction to San Antonio – the first school in Texas
- Supplies intellectual talent to companies in the Tech Corridor
- Generates synergy with federal agencies





UTSA®

School of Entrepreneurship & Technovation

School of Entrepreneurship & Technovation

Nurturing the big ideas
that transform our
world



University of Utah
Lassonde Entrepreneur Institute

Degree programs and professional certificates



Prototype labs



Entrepreneurship incubators



Creative spaces for startups, collaboration



Living/learning facilities



Meetups and workshops



Business model competitions



Commercialization programs



Innovation bootcamps

IMPACT

School of Entrepreneurship & Technovation

- Positions San Antonio as a leader in a new field
- Responds to increased interest in entrepreneurship nationally
- Translates UTSA's research into economic development
- Supplies intellectual talent to companies in the Tech Corridor and Geekdom





UTSA®

Urban Education Institute

Urban Education Institute

Eradicating poverty
through education



University of Chicago
Urban Education Institute

Urban Education Institute



High quality research
impacting education
policy and practices



Development of a
University Lab School



Partnerships
with K-12 and
community
organizations



Leadership
development



Residential experiences
for undergraduate and
graduate students,
connecting theory
to practice



Policy studies

IMPACT

Urban Education Institute

- Embeds faculty expertise directly in San Antonio schools
- Accelerates teacher workforce production
- Leverages the innovation-friendly culture of San Antonio
- Establishes a Laboratory School – unprecedented in Texas





UTSA®

Urban Science Institute

Urban Science Institute

Driving public policy
and the future of San
Antonio

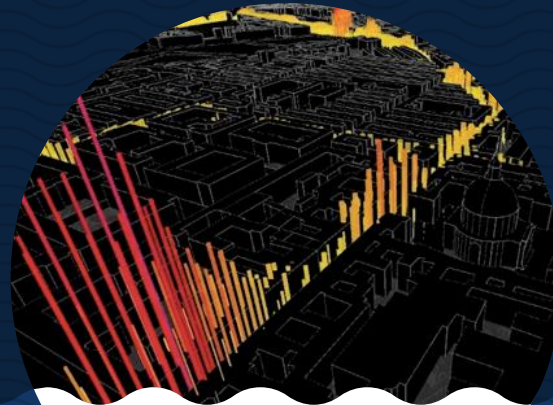


New York University
Center for Urban Science & Progress

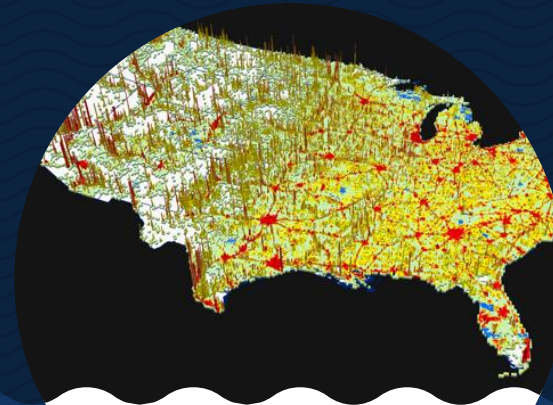
University of Chicago
Urban Center for
Computation and Data



MIT
Senseable City Lab



ORNL
Urban Dynamics
Institute



NYU
Center for Urban Study
and Progress



IMPACT

Urban Science Institute

- Tackles urban challenges through new disciplines
- Combines big data, data science & data visualization
- Essential for transportation and growth planning
- Establishes the first institute of its kind in Texas
- Imperative to San Antonio as a major city



LOOKING AHEAD

Downtown Campus Initiative

PHASE ONE NOW

- NSCC
- Urban Education Institute
- School of Data Science

PHASE TWO SUMMER/FALL 2018

- Urban Speaker Series
- ULI Downtown Campus Effort
- Campus Master Planning
- PUF/TRB Requests
- Cattleman's Square RFP
- Others TBD

PHASE THREE 2019 AND BEYOND

- School of Entrepreneurship & Technovation
- Urban Science Institute
- Capital Campaign & 50th
- Others TBD